

AUGUST

28 Moulton Bike exhibition – open 10am-5pm every day, until 6 September, The Vaults, Lamb Yard. Discover the true artistry in the engineering of these classic bicycles. Talks, meetings and films throughout the week. More details: Made in Bradford on Avon.

SEPTEMBER

4-6 Walking Festival
Fourth Annual Walking Festival featuring over 20 walks in and around Bradford on Avon ranging from 1 mile to 12 miles. Book at Holidays and Cruises For You, Silver Street (opposite The Bear), tel 01225 865725. Full programme: walkbradfordonavon.org/bradford-on-avon-walking-festival/

5-6 Bradford on Avon Cycling Festival
Bike rides, cycle jumble, hill climb, cyclo-cross, children's events and much, much more. More information: www.bradfordonavoncyclingfestival.co.uk

5-19 Arts Festival
A huge array of events around the theme of Flower Power, ending

Save the date ...



Photo: Richard Craft

with a summer party in Westbury Gardens and a lantern procession on 19 September. Full details: www.boaartsfestival.com

13 Flower & Produce Show
St Margaret's Hall 2-4pm
If you grow it, show it! Free to enter, free to visit. Call the Town Council on 01225 864240 for more details, or to pick up a schedule.

16 Bradford on Avon Area Board
St Margaret's Hall, 6.30 for 7pm. All welcome.

26 St Laurence Street Party
12 noon-5pm, Church Street, Bradford on Avon.

27 Farmers' & Artisan Markets
Lamb Yard. 10.30am-2pm. The market combines a wonderful selection of locally produced food, drink and plants with a multitude of artisan products. More details: 01225 282801.

OCTOBER

25 Farmers' & Artisan Markets
Lamb Yard. 10.30am-2pm. More details: 01225 282801.

NOVEMBER

6-8 The Bradfordians
The Lady in the Van, St Margaret's Hall. A rare treat for Alan Bennett fans: the true story of the lady who wanted to park her home – a camper van – on Bennett's drive for three weeks, and stayed for 15 years! More details: www.thebradfordians.com
Tickets from Wiltshire Music Centre: www.wiltshiremusic.org.uk or tel 01225 860100.

7 Firework Night
Beehive Field, Trowbridge Road. Live music, barbecue, hog roast, bar. Gates open 5.30pm, fireworks 7pm. In aid of the Bradford on Avon Schools.

21 Save the Children Christmas Fair
10am-3pm. St Margaret's Hall, Bradford on Avon.

27 Christmas Lights Switch On
7pm. See the Christmas lights being switched on from Westbury Gardens and stay for late-night shopping and celebrations.

28 Christmas Fair
The Vaults, Lamb Yard

29 Farmers' & Artisan Markets
Lamb Yard. 10.30am-2pm. More details: 01225 282801.

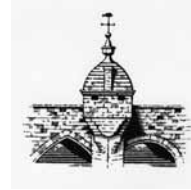
DECEMBER

3&4 Henning Wehn
The German comedy ambassador comes to St Margaret's Hall, 8pm. Book now at www.bathcomedy.com

8-13 Christmas Tree Festival
Holy Trinity Church

20 Farmers' & Artisan Markets
Lamb Yard. 10.30am-2pm. More details: 01225 282801.

● All information correct at time of going to press. Bradford on Avon Town Council can accept no responsibility for any errors, omissions or changes.



Bradford on Avon Town Council



Summer 2015

NEWSLETTER

Youth & Community Centre open for all

Bradford on Avon's Mayor, Alison Craddock, was very pleased to be able to formally open the new Bradford on Avon Youth and Community Centre, on Saturday 18 July.

Just over a year ago, town councillors were shocked to learn that Wiltshire Council had decided to drastically cut funding for youth services, and that these premises were to be closed and mothballed.

Alison said: "This seemed terrible for a building with excellent disabled access, and less than 20 years old. The Centre, next door to Fitzmaurice Primary School off Frome Road, offers a great community space, including a kitchen and social area, meeting venues, a project/art room, soundproofed music room and an excellent sports hall.

"By closing down the Centre, our youth group and various other community groups would be without a home. The town's young people confirmed that one of their most wished-for aspirations would be somewhere to continue to meet and socialise.

"We worked hard for several months,

in negotiation with Wiltshire Council, to try to achieve a full asset transfer of the Youth and Community building to the Town Council. We were unable to secure the full transfer, as Wiltshire Council wish to retain ownership of the valuable redevelopment land. However, we have managed to secure a lease for the next five years, and hopefully for much longer.

"We have given the Centre a face-lift to brighten it up, and it is now fully available for use, providing a very good community space on the southern side of town. We were delighted that more than 50 people attended the opening and hope that community groups will now begin to make use of this brilliant facility."

The Centre provides excellent facilities for meetings, arts and music groups, social events, children's parties, etc. Some parking is available at the Centre, with a larger car park five minutes' walk away at Bailey's Barn. A leaflet detailing charges and times is available from the Town Council offices at St Margaret's Hall.

■ Mayor Alison Craddock cuts the ribbon at the Bradford on Avon Youth and Community Centre in Frome Road



Photo: Wiltshire Times/Diane Vose

YOUR TOWN COUNCIL

NORTH WARD COUNCILLORS

Cllr Alison Craddock
Chair and Mayor
20 Wingfield Road,
Trowbridge BA14 9ED
01225 284811
alisoncrad@gmail.com



Cllr Martin Newman
18B Newtown, BA15 1NE
01225 864028
martin.newman.wca@gmail.com



Cllr Simon Fisher
9 Sladesbrook Close
BA15 1TD
01225 862735 srfisher@talktalk.net



Cllr Janet Repton
33 Priory Close BA15 1QY
01225 866080
jrepton712@btinternet.com



Cllr Pam Hyde
Old Court
Woolley Street BA15 1AE
07768 095507
pamc_hyde@hotmail.com



Cllr Mike Roberts
2 Avon Close BA15 1JJ
01225 865605
mroberts88@sky.com



SOUTH WARD COUNCILLORS

Cllr Gwen Allison
Chair, Planning, Highways
& Transport Committee
217 Trowbridge Road,
BA15 1EU
01225 865154
gwen.allison1@mypostoffice.co.uk



Cllr Jonathan Brown
10a Frome Road BA15 1LB
01225 866631
jrmandpmbrown@hotmail.com



Cllr Laurie Brown
Deputy Mayor; Chair,
Town Mgmt & Devt Cttee
34 Fitzmaurice Close
BA15 1UE
01225 865204
l.brown.fitzmaurice@hotmail.co.uk



Cllr Magnus Macdonald
21G Frome Road BA15 2LB
01225 867146
magnus.magplan@me.com



Cllr John Potter
36 Avonfield Avenue
BA15 1JE
01225 287648
mrjohnpotter@hotmail.co.uk



Cllr Ian Thorn
9 Round Maise
Calne SN11 0BE
01249 816351
info@ianthorn4bradfordsouth.co.uk



Bradford on Avon Town Council, St Margaret's Street, Bradford on Avon, BA15 1DE

Town Clerk: Sandra Bartlett
Tel: 01225 864240
Email: office@bradfordonavontowncouncil.org.uk

St Margaret's Hall and Youth & Community
Centre enquiries/bookings
Tel: 01225 309210
Email: bookings@bradfordonavontowncouncil.gov.uk



Like for latest news and events - www.facebook.com/boatowncouncil



Connect with us - www.twitter.com/boatowncouncil



Read our blog posts - <http://www.bradfordonavontowncouncil.gov.uk/newsheadlines.html>

● Keep up to date with news and activities at www.bradfordonavontowncouncil.gov.uk

● Sign up for news straight to your inbox via our website

● Information is also available on our two noticeboards located in the Town Council office window and Westbury Gardens.

On your bikes for a great weekend of family cycling fun



Image courtesy of arztsamui at Free-DigitalPhotos.net

This autumn, three weeks of cycling fun in Bradford on Avon culminate in the grand finale of the cycling festival weekend on 5 and 6 September.

Bradford on Avon Cycling Festival weekend promises to be fun for everyone – with everything from a challenging hill climb and family rides to cycling themed films and a cycle jumble. The weekend's cycling activities will be accompanied by plenty of children's fun too, with cycling skills sessions, bouncy castles, face painting and entertainment.

Highlights include a cycle jumble at St Margaret's Hall on the Saturday, with screenings of cycling films the same evening; cycle rides for all across the weekend, a family treasure hunt at Barton Farm, a bike demo day at TT cycles, a bike art exhibition at the Fat Fowl, live bike art with Jon Mulvaney in Lamb

Yard and Dr Bike – bike maintenance and MOT – all weekend in Westbury Gardens.

The grand finale is The Bradford on Avon Hill Challenge: are you tough enough to beat the mighty Masons Lane?

Leading up to the weekend, come and find the beautifully decorated bikes placed all around the town, complete the Bike Trail and enter a competition to win a brand new bike.

A Moulton bike exhibition will be on show in The Vaults, Lamb Yard, from 28 August.

Working with Alzheimer's Support, the proceeds of the weekend will help to provide day care, a much needed resource for people with dementia. We would love to raise £1,000: help us by joining in the fun! Anything we raise will be matched by apetito, one of the main supporters of the festival. More information: www.bradfordonavoncyclingfestival.co.uk

Meet the Mayor

Mayor, Alison Craddock, gives us the lowdown on her background, interests and plans for the future

I am 65 years old and have lived in the Bradford on Avon area since 1976. I have two sons, both married, two granddaughters, and a grandson.

I was born in the lovely city of Salisbury, and had an extremely happy childhood there with my very dear parents and sister.

I attended South Wilts Grammar School, and went on to study at Bath Academy of Art in Corsham, followed by a Post-Graduate Certificate in Education at Reading. I married, went to live in Trowbridge, and taught for a short while at The John of Gaunt School, after which I took a break to have my family.

I returned to teaching when my younger son was 11, accepting a job as an art teacher at Lavington School. I became head of art, and really loved my job, also moderating for GCSE art exams, training student teachers from Bath Spa University, and running school art trips around the world.

I became involved with the local Liberal Democrat party shortly after moving into the area. However, I do not regard local council work as particularly politically motivated, and am more concerned with achieving a consensus on the right way forward for Bradford.

Our town is one of the loveliest small towns in the country, but faces numerous problems due to strangulation by traffic and lack of government investment in its future. I was pleased to be asked to be Mayor, but am very aware of the great difficulties facing our town.

Since retiring three years ago, I have found more time for council work, and spend a good deal of my spare time painting – something I intend to continue, with an exhibition planned next year.

I have worked for our local branch of Save the Children for many years: we are famous for our home made cakes!

Moving ahead with area boards

Bradford on Avon Area Board is one of 18 across the county, run by Wiltshire Council. It covers the town and surrounding parishes of Holt, Limpley Stoke, South Wraxall, Staverton, Monkton Farleigh, Westwood, Wingfield and Winsley.

Four local councillors represent the Bradford on Avon community area and make up the board: Rosemary Brown, Ian Thorn, Magnus Macdonald and Trevor Carbin. Ian and Magnus are also town councillors, and Rosemary lives in Bradford.

Working in partnership with local communities, Wiltshire Council can achieve much more than it could on its own – with the aim of providing better services, better communities and a better quality of life for everyone in Wiltshire.

Several subgroups report to the area board:

- the Community Area Transport Group agrees spending on minor highway capital improvement projects
- the Campus Board is developing an investment strategy for more joined-up and targeted public service delivery
- the Local Youth Network is delivering community-led youth services and positive activities for young people
- the Air Quality Alliance is delivering an air quality action plan and associated public health initiatives.

One of the board's key roles is to help local people find solutions to complex or non-routine problems that affect the community as whole. You can raise your concerns with board members, via the website at www.wiltshire.gov.uk/areaboards or through community engagement manager Peter Dunford, on 01225 713060 or email peter.dunford@wiltshire.gov.uk

For most routine problems, Wiltshire Council can respond directly and this is the best place to start for most problems that are likely to affect you, such as reporting anti-social behaviour or benefit fraud, highways defects (faulty street lights, pot holes, drainage problems), dangerous structures, missed rubbish or

recycling collections, noise nuisance, planning matters, public toilets, public transport, abandoned vehicles, street care and vandalism.

You can also report a problem to the Area Board at http://services.wiltshire.gov.uk/Forms/area_board/index.php

Since taking over the chairmanship of the Area Board in May, Magnus Macdonald has been looking at ways to make the board more relevant to local people.

He said: "It is clear that the Area Board needs revamping, especially in the light of the swingeing cuts imposed on local government.

"There is an opportunity to make a real difference, by linking the grants available from the Area Board, Community Area Transport Group and Local Youth Network to other forms of fundraising, including parish contributions, crowdfunding and all other possible grant sources.

"We believe the real difference can be made by working together: if we combine the offerings of our parishes and the town, we can offer visitors an experience to rival the best in the country.

"If we look at our footpaths, cycleways and canal as joint assets we can have a network that really works.

"If we recognise our Health Centre as the centre of excellence that it is we can attract outside investment to improve its facilities.

"If we join up to develop a community bus service, perhaps we can resist the changes and cuts that are inevitable from the Wiltshire passenger transport review.

"By using the Area Board's funds to support, pump-prime and encourage local community projects we could become more self-reliant and resilient as communities.

"These are just a few of the areas that are worthy of consideration: who knows – we could even have fun!"

■ **The next Area Board meeting is on Wednesday 16 September, in St Margaret's Hall at 6.30 for 7pm.**

How does your garden grow?

Bradford on Avon's annual Flower and Produce Show will be back in St Margaret's Hall on Sunday 13 September, and we are looking forward to a record crop of entries.

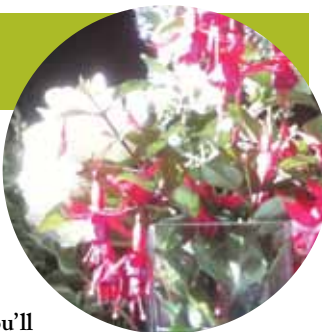
This year all the usual favourites keep their place but we have tweaked things a little here and there. To enhance the element of danger already introduced by the largest cabbage, we have introduced a new category for hottest chilli (although we are having trouble finding a judge for it).

For those who are drawn to creating miniature worlds, there's a painted stone or pebble category, and we are excited and intrigued about the 'Most items in

a matchbox beginning with B' category in the children's section.

Whether you're a dedicated vegetable grower, flower arranger, cook or craftsperson, you'll find a class to suit you in this year's schedule, available now from the Town Council office, the station and many businesses in town.

And don't forget – the show, organised by the Town Council – is FREE to enter, and to attend. We look forward to seeing you there.



For details of Town Council meetings, events and venue hire charges, please visit our website: www.bradfordonavontowncouncil.gov.uk

Council takes over town centre 'jewel'

The Town Council recently took over the ownership of Westbury Gardens – one of the undoubted jewels in Bradford's crown.

The riverside gardens are valuable both as a beautiful park and a fabulous location for community events. We look forward to working with local residents to increase their use over the coming years. Westbury Gardens are available to hire: please contact the Town Council office on 01225 864240.

The Town Council has also expanded its staff, as it looks to develop its provision of services to the local community. In April we employed two new part-time office staff to cover our reception and provide additional

admin support to St Margaret's Hall, outside areas and general administration.

Gill Murray has worked for and with local government for more than 30 years and enjoys working in a public-facing role closer to her home town of Melksham. Louella Curtis, our afternoon receptionist, lives in Bradford on Avon and is already a familiar face to many people, having been educated here, and also through her work in a local travel agents'.

Gill and Louella join Town Clerk Sandra Bartlett; her deputy, Emma Sylvester; office administrator Val Baker, and St Margaret's Hall manager Tim Yeomans and his team.

Neighbourhood Plan consultation moving forward



The draft Neighbourhood Plan is now being finalised for its formal round of public consultations with the people of Bradford on Avon, as well as statutory consultees such as the Environment Agency and parish councils. The six-week consultation will begin in September, and the Town Council hopes the public will, once more, readily participate.

A condensed version will be distributed to every household in the town. The full version will be available via the Town Council website, and hard copies will be available to view and comment on, in key locations such as the Town Council office and the Library.

After this final consultation, the plan will be amended if and as required, and a final draft submitted to Wiltshire Council for review.

Wiltshire Council will collate additional representations and then appoint an independent examiner to conduct a formal assessment of the plan. The examiner will check the plan against national policy, ensures it conforms with Wiltshire Council's core strategy, and that it is compatible with EU obligations. If the examiner approves the plan, it will be subject to a community referendum for all those in the plan area.

It is the hope of the Town Council, and all those involved in researching and preparing the plan, that the public will vote in favour of a plan that is designed to give the people of Bradford on Avon far greater influence on how our town develops in the years ahead.

Carbon neutral by 2050?



Climate Friendly Bradford on Avon's main mission is to help our town become carbon neutral by 2050.

Knowing where you want to get to is one thing – but it also helps to know your starting point. We've always struggled with pinning down the town's carbon footprint, and we're not alone. Academics and scientists have been wrestling with this question for some time, and the discussions will continue.

However, we're making progress. The Department for Energy and Climate Change (DECC) publishes figures for average household energy consumption in Bradford on Avon. We know how many households there are from the census data, so we can multiply the average use by this number and come to a figure for energy usage in kilowatt hours. There's then a standard formula for converting this to tonnes of CO₂.

But carbon emissions come from many more sources than just household energy use. Transport, agriculture, business – all play a part. Luckily, DECC also publishes a breakdown of this mix, so we can 'gross up' the energy figure to get to an approximate total. It's not perfect, but it gives us an educated estimate. And it turns out that Bradford on Avon emits about 99,000 tonnes of CO₂ a year.

Great. But what on earth does that mean? And, more importantly, what effect can we as individuals have on what seems like such a large figure?

Our next challenge is to put some figures against the actions we can all take, such as improving insulation and using LED lighting, and we're going to be working on this next.



Meanwhile, there are things you can do which will help reduce our carbon footprint now. One of the easiest is to switch your energy supplier to one which supplies energy from renewable sources. Good Energy and Ecotricity are just two of these suppliers, and you can switch via the CFB website. If every household in town switched to a 100 per cent renewable energy supplier, we could immediately reduce our annual CO₂ emissions by almost 24,000 tonnes!

Around the same amount of CO₂ is generated by transport in the town, and road transport also affects air quality. So there are compelling reasons for trying to find an alternative to using your car. Everyone knows how difficult this can be, so maybe we could each start by just replacing one of our regular car journeys each week with a greener alternative. We're lucky enough to live somewhere with a great network of footpaths, many of which give lovely views of hidden parts of the town. The CFB Active Travel map has details of footpaths, and we've also produced a pocket timetable for the Town Bus if you don't fancy carrying your shopping home. Both should be available in the library.

Visit www.climatefriendlybradfordonavon.co.uk for details of all of our meetings, and how to switch your energy supplier.